

ARIZONA ANTELOPE FOUNDATION

Vekol Valley AGFD/BLM/USFWS Sonoran Pronghorn Release Pen Reconstruction One Day Project October 15, 2022—Meet Time: 8:30am

Project Location: We will be working on BLM lands south of Interstate 8, at the Vekol Valley Exit at Mile Marker #144, 25 miles west/southwest of Casa Grande, AZ.

Project Day: Saturday October 15th gathering by 8:30AM at the meet location noted in the map and described as meet/camp site, to then caravan as a group down to the pen location. Work will continue until completion. With 25-35 volunteers the work should be accomplished by 5pm for your respective drives home.

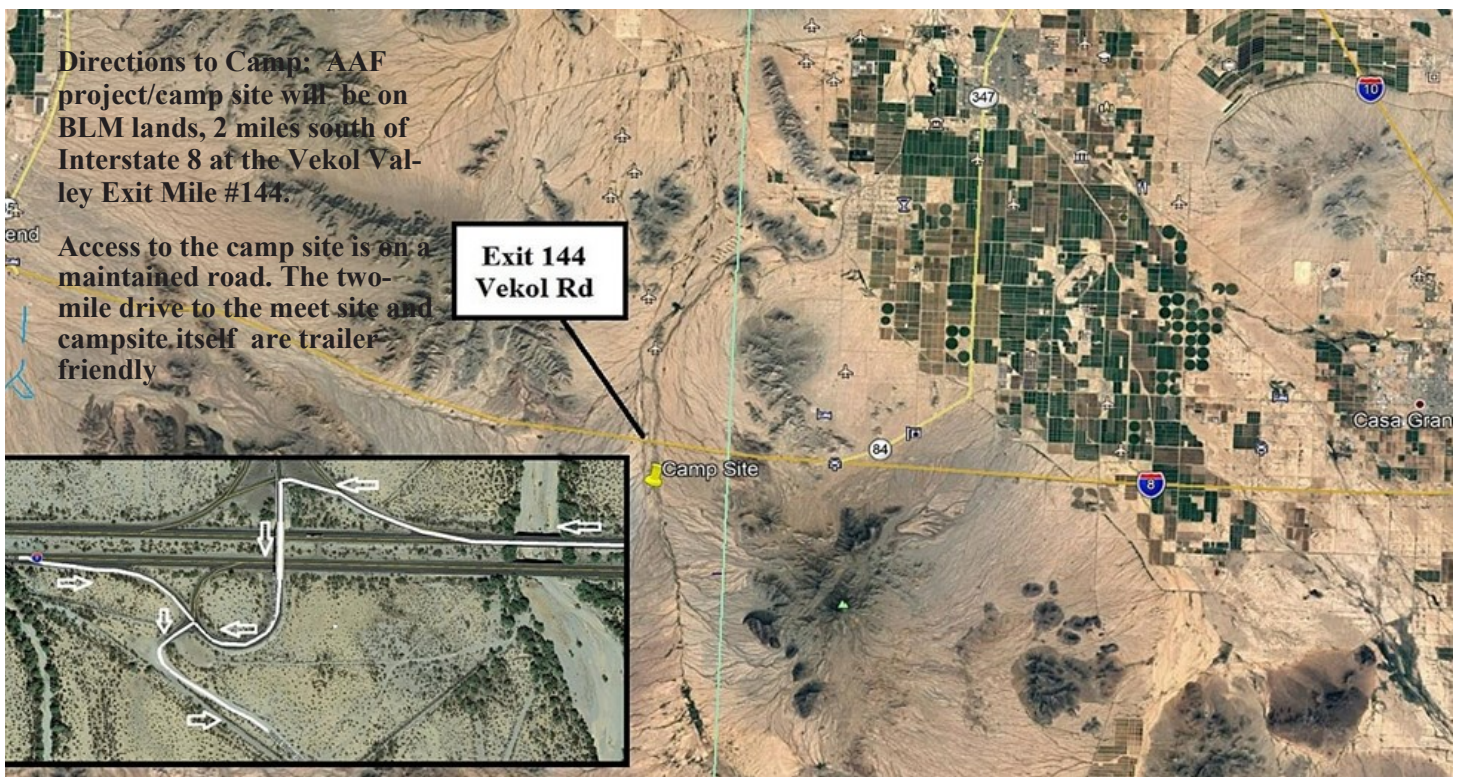
Project Activity: We will be rehangng 6 foot woven wire covered panels of fencing on a 20 acre Pronghorn enclosure that is made up of out of 8 foot T posts.

Sonoran Pronghorn Benefits: This pasture is used to create a predator free environment for holding 20-30 pronghorn for a couple of week calming period. Pronghorn to be introduced to the new pen in mid-December with the “soft release” to occur a couple of weeks later. This release pasture is located on the eastern boundary of historic endangered Sonoran Pronghorn habitat and is intended to extend their range. As you know we have been and will along with the Arizona Wildlife Federation continue to remove unneeded livestock fence in this zone to make it more Sonoran Pronghorn friendly.

What to Bring: Work gloves (the AAF will have a limited supply), snacks, water, personal gear.

Meals: Please provide your own lunch to eat in the field on Saturday. AAF will provide field water on the project day. We will not be hosting a camp or our usual meals.

RSVP/Contact: Please register by **Monday, October 10th** so we can plan to have enough food and tools for everyone. The direct link to register online for this project is <https://azantelope.org/event-4979307>. You may also **RSVP** to info@azantelope.org. The AAF phone number for project info/questions is 480.702.1045.



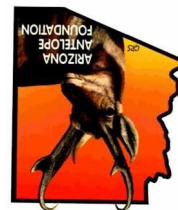
From Gila Bend: Drive 25 miles east on Interstate-8 and exit south at the Valley Vekol Exit MP #144. Drive 2 miles south to the campsite located on west side of the road.

From Casa Grande: South of Casa Grande on Interstate-10 take the Interstate-8 intersection west toward Yuma. Drive 34 miles west on I-8 and exit south at Vekol Valley Exit MP #144. Drive 2 miles south to the campsite located on the west side of the road.

Please RSVP by October 10th so we can plan to have enough tools.

NONPROFIT
ORG.
U.S. POSTAGE
PAID
Tucson, AZ
PERMIT NO. 690

ARIZONA ANTELOPE FOUNDATION
P. O. BOX 1191
MESA, AZ 85211
ADDRESS SERVICE REQUESTED



YOU ARE INVITED!

Visit our website for more information
www.azantelope.org