

ARIZONA ANTELOPE FOUNDATION GREER FENCE REMOVAL AND MODIFICATION JUNE 10, 2017

Project Location: We will be working on the Apache National Forest a few miles north of Big Lake in the White Mountains.

Project Begins: Saturday June 10th at 7AM (sunrise is 5:00am!) and possibly Sunday 7-11. Meet at camp for all start times. The campsite is located about five miles east of the project site.

Project Activity: We will be modifying approximately 2 miles of existing low hanging four strand fence by removing the bottom strand of barbed wire and replacing with a single strand of smooth wire at a height of 16 inches.

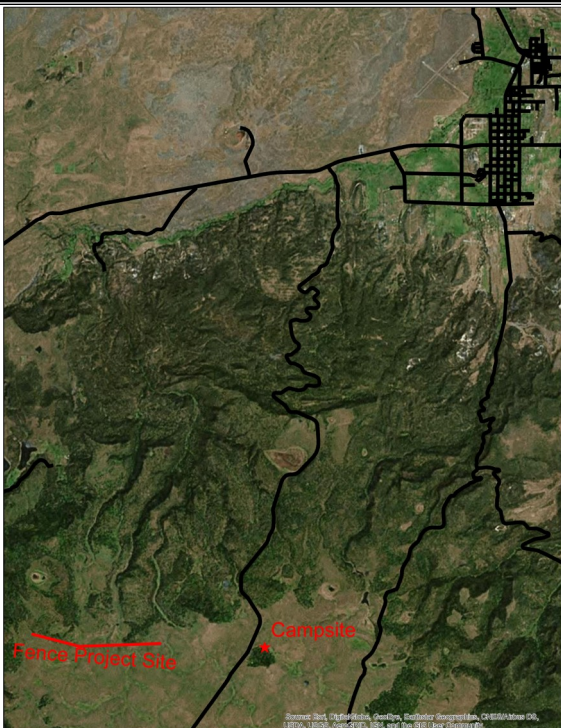
Pronghorn Benefits: The project is located in a high elevation grassland that is key summer range for pronghorn. The pronghorn must cross this fence while migrating between this summer range and lower elevation winter range. Improving this fence will also allow more access to the summer range. Retaining the travel connectivity within the summer range is critical to maintaining this population of pronghorn which summer and reproduce near Big Lake. This project is our second annual project to enhance habitat for these migratory pronghorn. Subsequent projects will work up into the primary summer range modifying and or removing livestock fences.

Volunteer Benefits: All volunteer work hours and mileage will be use as in-kind match for federally funded wildlife enhancement projects including the Arizona Game and Fish Habitat Partnership program.

What to Bring: Workgloves (The AAF will have a limited supply), snacks, water, personal gear.

Meals: Please provide your own lunches to eat in the field on the Saturday work days. The AAF will be providing dinners on Friday and Saturday nights and continental breakfasts with coffee and juice on Saturday and Sunday mornings.

Contact: Glen Dickens at (520-247-4907) for project information. If you are planning to attend, **please RSVP** to info@azantelope.org by **June 2nd** so we can plan to have enough food and tools.



Visit our website for a larger printer-friendly map
www.azantelope.org

Directions to Camp: AAF camp site will be located on the north side of Rudd Knoll, which is about 12 miles south of Highway 260 and 14 miles southwest of Eagar.

Travel 38 miles east of Pinetop on Highway 260; turn right (south) on State Highway 261 at mile post 393 (You can also take Highway 60 east from Show Low to Eagar and turn west onto Highway 260 to reach MP 393.); go about 12 miles south on Highway 261 to mile post 400.5 and turn left (east) at the AAF signs located on the north side of Rudd Knoll. Access until this turnoff is paved road and the camping area starts within a ¼ mile of the highway. Please note this is a public camping area, but efforts will be made to “reserve” a specific AAF camping area.

Project Location: The project site is located approximately 3 miles west of camp. Take Forest Road 409 (FR 409) west from State Route 261 about three miles. FR 409 is located about 1 mile north of camp from Highway 261. Work site is located about ¼ mile south of FR 409, and access varies according to the location.

Camping Restrictions: If fire restrictions are in place then no open fires will be allowed. This includes the use of charcoal. Cooking will be restricted to propane stoves.



AZ Antelope Foundation
PO Box 12590
Glendale, AZ 85318

NONPROFIT ORG.
U.S. POSTAGE
PAID
PHOENIX, AZ
PERMIT NO. 318

UPCOMING ACTIVITIES

May 20 House Rock Valley Fence Project Kane Ranch
June 10th Habitat Project Greer
June 17th Annual Hunter Clinic Embassy Suites Tempe
June 17th Pronghorn Recognition & Fundraising Banquet
August 12 Habitat Project Unit 7 Flagstaff
September 23 Habitat Project Bonita-Wilcox

Visit our website for more information
www.azantelope.org